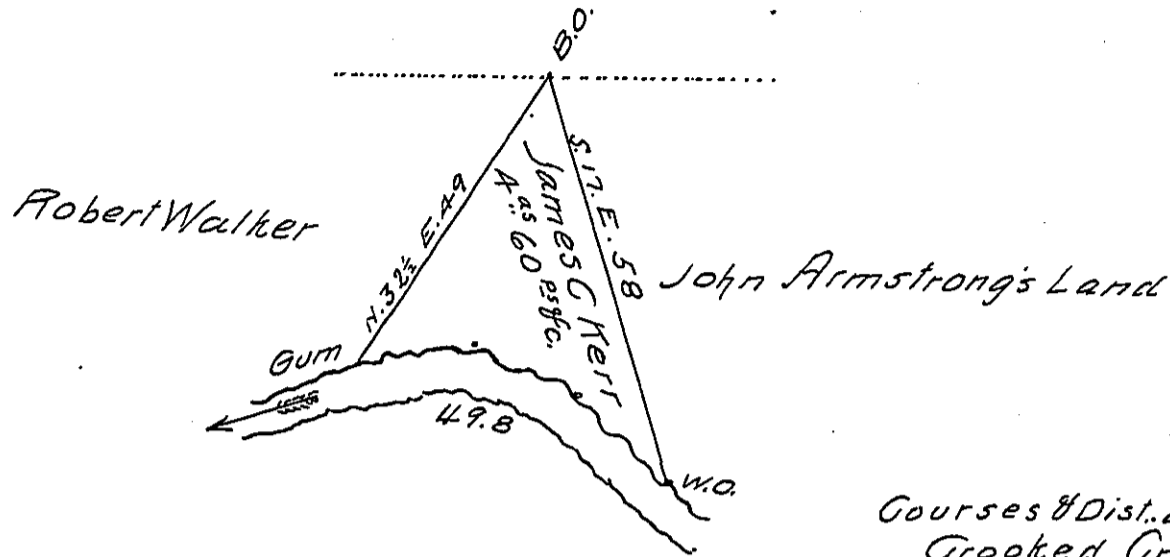


Michael Isaman



Courses & Dist. down
Crooked Creek.

N. 47 W.	18
N. 67 W.	15
S 76 1/4 W.	16.8
Total	<u>49.8</u>

In pursuance of a Warrant dated November 7th 1845. Granted to James C Kerr. Was surveyed to the same on the 11th day of November 1845 the above described tract of land containing four acres and Sixty perches and allowance of Six per cent &c. Situate in Kittanning Township Armstrong County on the North side of Crooked Creek.

J E Meredith

Special D.S.

To John Laporte Esqr
Surveyor General.

IN TESTIMONY that the above is a copy of the original remaining on file in the Department of Internal Affairs of Pennsylvania, made conformably to an Act of Assembly approved the 16th day of February, 1833, I have hereunto set my Hand and caused the Seal of said Department to be affixed at Harrisburg, this ninth day of August 1905

Goac P Brown
Secretary of Internal Affairs.